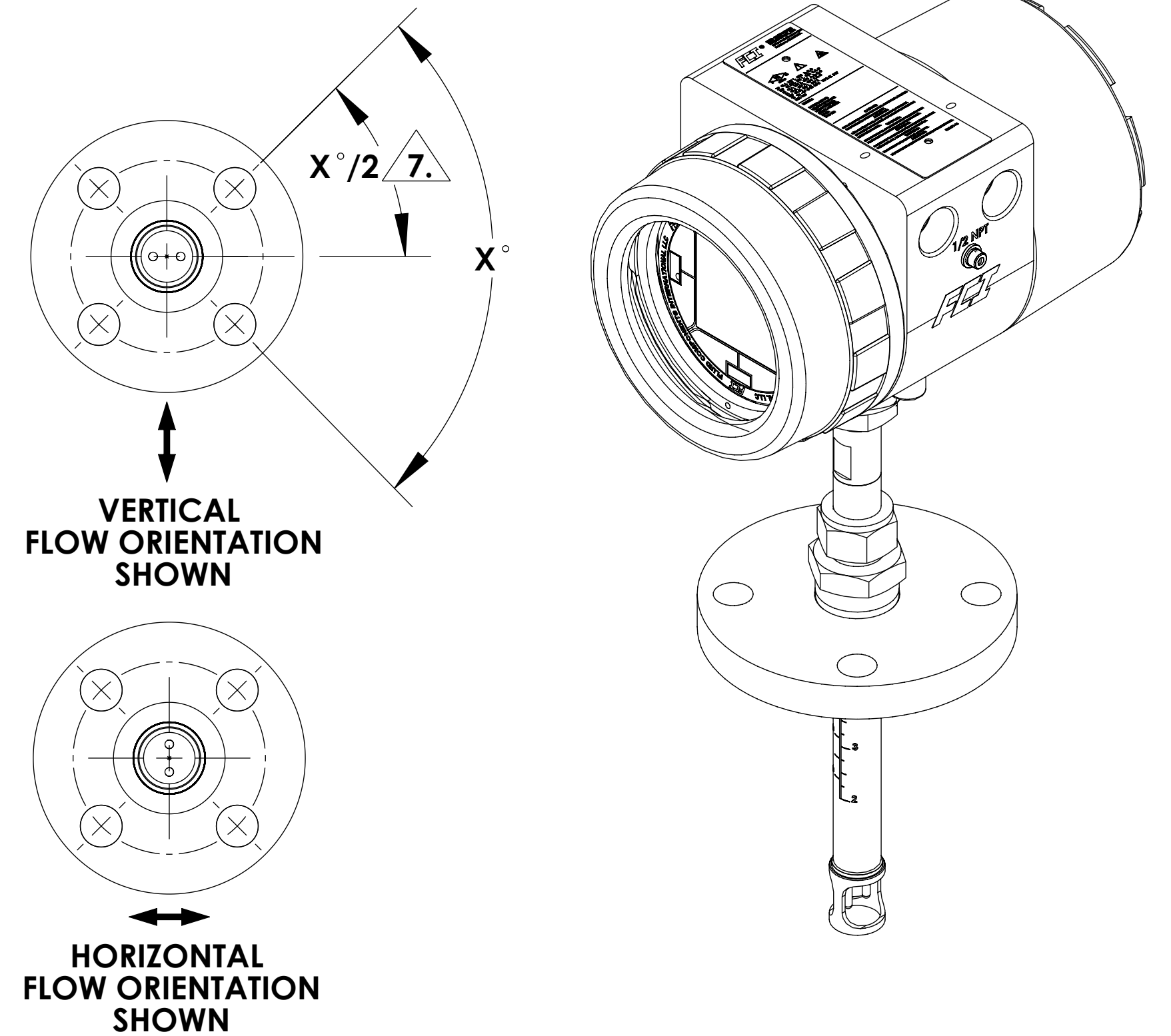
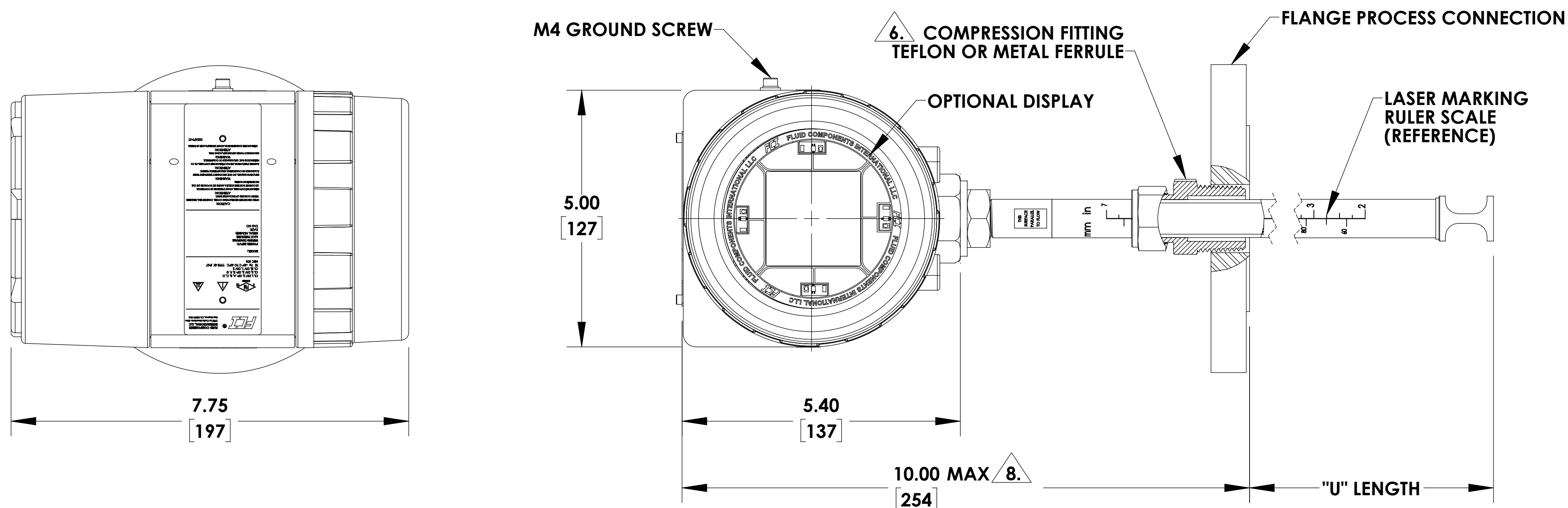


## NOTICE OF PROPRIETARY RIGHTS

This document contains confidential technical data, including trade secrets and proprietary information, which is the property of Fluid Components International LLC (FCI). Disclosure of this data to you is expressly conditional upon your assent that its use is limited to use within your company only (and does not include manufacture or processing uses). Any other use is strictly prohibited without prior written consent of FCI.

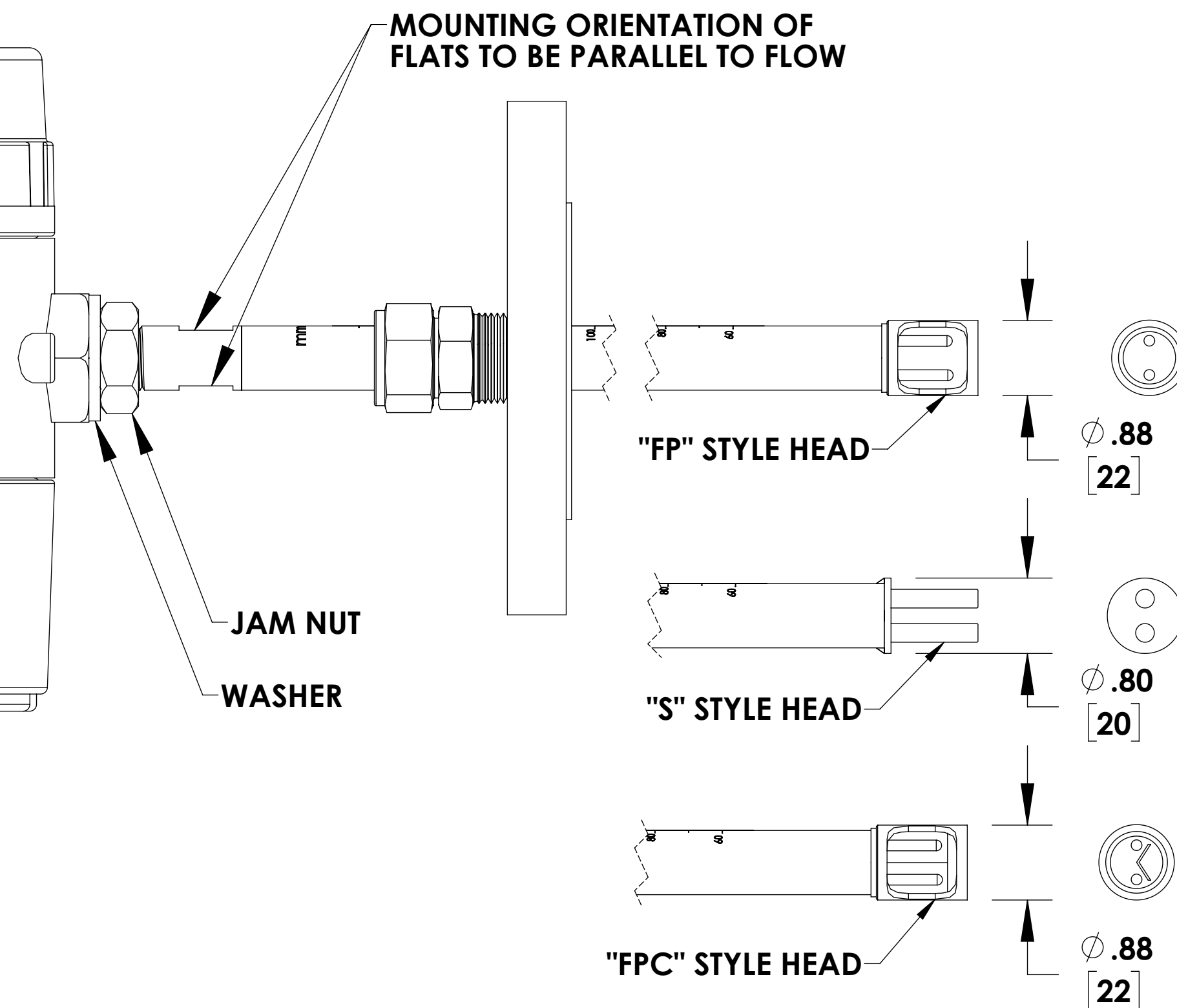
REVISION		
REV	DESCRIPTION	DATE
B	SEE ECN006341	03/27/2019



**ENCLOSURE MEETS EXPLOSION PROOF,  
WATER AND DUST TIGHT APPROVALS.  
(SEE MANUAL FOR SPECIFIC APPROVAL TYPES)**

**4X 1/2 INCH NPT OR M20  
CUSTOMER CONDUIT PORTS**

**✓ MOUNTING ORIENTATION OF FLATS TO BE PARALLEL TO FLOW**





## SPECIFICATIONS

Customer: \_\_\_\_\_  
Purchase Order No: \_\_\_\_\_  
Customer Order No: \_\_\_\_\_  
Wetted Surface Material: \_\_\_\_\_  
Max Operating Temp: \_\_\_\_\_  
Max Operating Pressure: \_\_\_\_\_  
Process Connection: \_\_\_\_\_  
Ferrule Type: \_\_\_\_\_  
U Length: \_\_\_\_\_  
Serial No: \_\_\_\_\_  
Tag No: \_\_\_\_\_

## OUTLINE/INSTALLATION DRAWING

8. MAXIMUM DIMENSION WHEN FLOW ELEMENT IS INSTALLED TO CUSTOMER REQUIRED "U" LENGTH
7. FLANGE BOLT PATTERN CAN BE ROTATED INDEPENDENT OF REQUIRED SENSING ELEMENT ORIENTATION FLAT TO DESIRED CUSTOMER POSITIONING. NUMBER OF BOLT HOLES VARY WITH FLANGE SIZE AND RATING. TYPICAL NUMBER OF BOLT HOLES IS EITHER FOUR (4) AS SHOWN OR EIGHT (8).
6. COMPRESSION FITTING SPECIFICATIONS:
  - TEFLON FERRULE: 150 PSIG [10 BAR(G)] MAX; 200 °F [93 °C] MAX.
  - METAL FERRULE: 1000 PSIG [69 BAR(G)] MAX; 500 °F [260 °C] MAX.(LIMITATION OF PRESSURE IS DEPENDENT ON FLANGE RATING, WHEN METAL FERRULE IS SELECTED.)
5. SEE IO&M FOR ADDITIONAL INFORMATION AND INSTRUCTION.
4. ALL ORIENTATIONS AND/OR MOUNTING REFERENCES ARE INDICATED FROM TERMINAL ENCLOSURE END OF SENSING ELEMENT.
3. FOR ELECTRICAL OPTIONS, CONNECTIONS AND TESTS, SEE APPLICABLE WIRING DIAGRAM.
2. THIS DRAWING IS REFERENCE DOCUMENT ONLY.
1. DIMENSIONS IN BRACKET [ ] ARE IN MILLIMETERS.

**NOTES: UNLESS SPECIFIED OTHERWISE**

		UNLESS OTHERWISE SPECIFIED DIMENSIONS ARE IN INCHES  TOLERANCES  DECIMALS    ANGULAR  .X                    ±1' .XX                  ±.03 .XXX               ±.010  MATERIAL   MACH SURFACE FINISH: 125 RMS MAX    MACH RAD .030  DO NOT SCALE DRAWING  PARTS TO BE FREE OF BURRS & SHARP EDGES	APPROVALS		FCI® FLUID COMPONENTS INTERNATIONAL LLC SAN MARCOS, CA 92078				
			PRODUCT CERT APVL N/A	DRAWN Fouad Chirar 4/9/2019		TITLE  TRANSMITTER, ST100,ST80 & ST100A SERIES FLANGED COMPRESSION FITTING, HAZARDOUS LOCATION, INTEGRAL			
			CONTRACT N/A	CHECK Matt Hall 4/10/2019					
			MFG ENGR N/A	ENGR Fouad Chirar 4/10/2019					
NEXT ASSY	USED ON		MATL MGMT N/A	ENGR N/A		SIZE D    CAGE CODE 64818    DWG NO. 004889    REV B			
APPLICATION		MFG N/A	AERO QUAL N/A						
THIRD ANGLE PROJECTION		QA 4/10/2019 Burt Tanaka	NUC QUAL N/A						
						SCALE NONE		SHEET 1 OF 1	